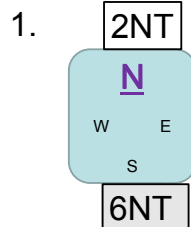


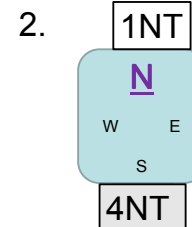
## When to bid slam

- Slams are rare. About 1-in-20 hands.
- 6NT requires 33 HCP
- Slam in a suit needs **a fit** plus 33 **TP** plus **control** of all suits



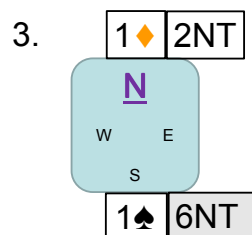
♠ K 6 5  
♥ K 10 3  
♦ Q 6 3  
♣ K Q 5 2

Arithmetic  
 $20 + 13 = 33$



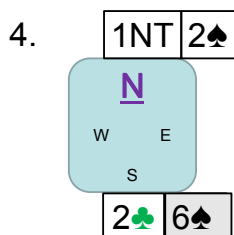
♠ K 6 5  
♥ K 10 3  
♦ K Q 6  
♣ K Q 5 2

Invite slam.  
 $15-17 + 16 = 31-33$ .  
Partner can pass this.



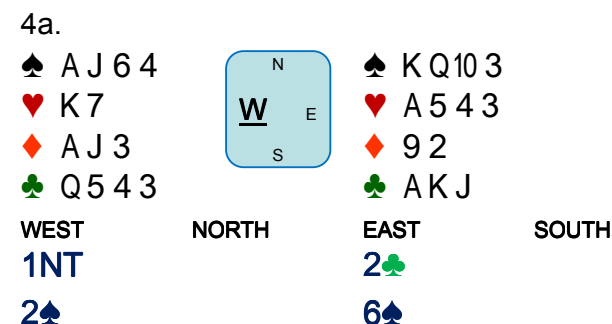
♠ K Q 6 5  
♥ K 10 3  
♦ Q 6  
♣ A J 5 2

Another easy one.  
The jump to 2NT = 18-19  
 $18+15 = 33$

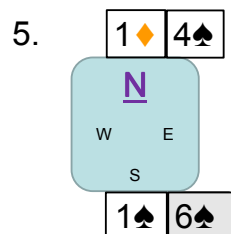


♠ K Q 10 3  
♥ A 5 4 3  
♦ 9 2  
♣ A K J

Stayman first, then  
 $15 + 18 \text{ TP} = 33$ .  
Prefer the 4-4 fit.

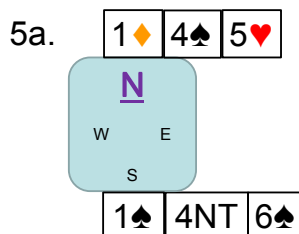


6NT makes 11 tricks  
but 6♠ makes 12 tricks.



♠ K Q 5 4 3  
♥ 2  
♦ A 6 4  
♣ K 7 4 2

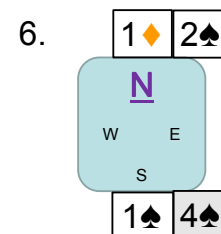
Partners jump shows 19+.  
 $19 + 12 = 31$   
but  $19 + 12 + 3 = 34$   
3 for the singleton.



♠ K Q 5 4 3  
♥ 2  
♦ A 6 4  
♣ K 7 4 2

4NT **Blackwood**, then  
 $5♣ = 0 \text{ aces (or 4)}$   
 $4♦ = 1$   
 $5♥ = 2$   
 $5♠ = 3$

South checks that the  
opponents don't have two  
aces.  
North shows 2 aces.



♠ A 7 5 4 3  
♥ A 2  
♦ 8 7 6  
♣ A K 3

Just game.  $2♠ = 12-15$ .  
 $15 + 15 + 1 = 31$ .  
If partner had jumped to  
 $3♠$ , slam would be likely.